

## EVENT PLANNER AND GUIDE

CHILD JULY  
COLLECTION

720 CENTRAL AVENUE

---

MOREAN  
GLASS STUDIOS  
AND HOT SHOP

719 CENTRAL AVENUE

---

MOREAN  
ARTS CENTER

719 CENTRAL AVENUE

---

MOREAN CENTER  
FOR CLAY

420 22ND STREET SOUTH



Dale Chihuly, *Float Boat* (detail), 2007, 3 x 12 x 4 1/2' Morean Arts Center, St. Petersburg, Florida, installed 2010





Serving you an amazing art experience in a unique event environment is indeed our pleasure.

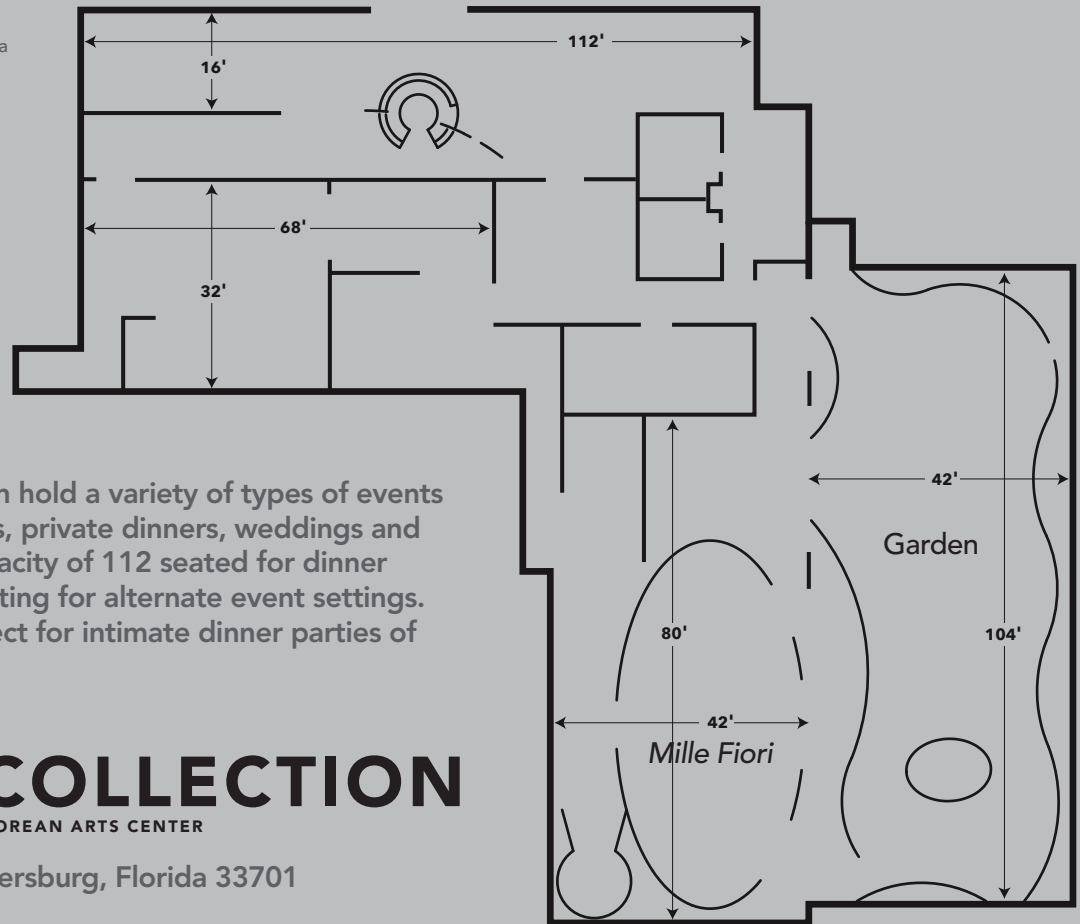
With four distinct creative and conversational venues in one of the most cultural cities of the southeast, the Morean Arts Center provides you with the most innovative and memorable event possibilities in all of the Tampa Bay area.

Dale Chihuly  
Chihuly Collection presented by the Morean  
Arts Center, 2010  
St. Petersburg, Florida





Dale Chihuly  
*Florida Rose Crystal Tower*, 2010  
 21½ x 5 x 4½'  
 Morean Arts Center, St. Petersburg, Florida



The galleries and garden can hold a variety of types of events including cocktail receptions, private dinners, weddings and more. The garden has a capacity of 112 seated for dinner parties and more in row seating for alternate event settings. The Mille Fiori room is perfect for intimate dinner parties of up to 60 people seated.

# CHIHULY COLLECTION

PRESENTED BY THE MOREAN ARTS CENTER

720 Central Avenue, St. Petersburg, Florida 33701  
[MoreanArtsCenter.org](http://MoreanArtsCenter.org)

Please contact us at 727.896.4527 or  
[info@moreanartscenter.org](mailto:info@moreanartscenter.org) for more information,  
 or to book a tour of the space.



# CHIHULY COLLECTION

The Chihuly Collection houses a permanent display of renowned art by artist Dale Chihuly throughout six galleries. Guests enjoy up close interactions with a variety of curated works of art and continue their experience in our garden event space featuring all native Floridian plants. Events held in the Chihuly Collection allow your guests unlimited private access to the entire space after regular business hours.



Above: Dale Chihuly  
*Azul de Medianoche Chandelier*, 2002 and *Drawing Wall*, 2010  
Morean Arts Center, St. Petersburg, Florida, installed 2010

Left: Dale Chihuly  
*Mille Fiori* (detail), 2010 10½ x 33½ x 10½'  
Morean Arts Center, St. Petersburg, Florida



# MOREAN CENTER FOR CLAY

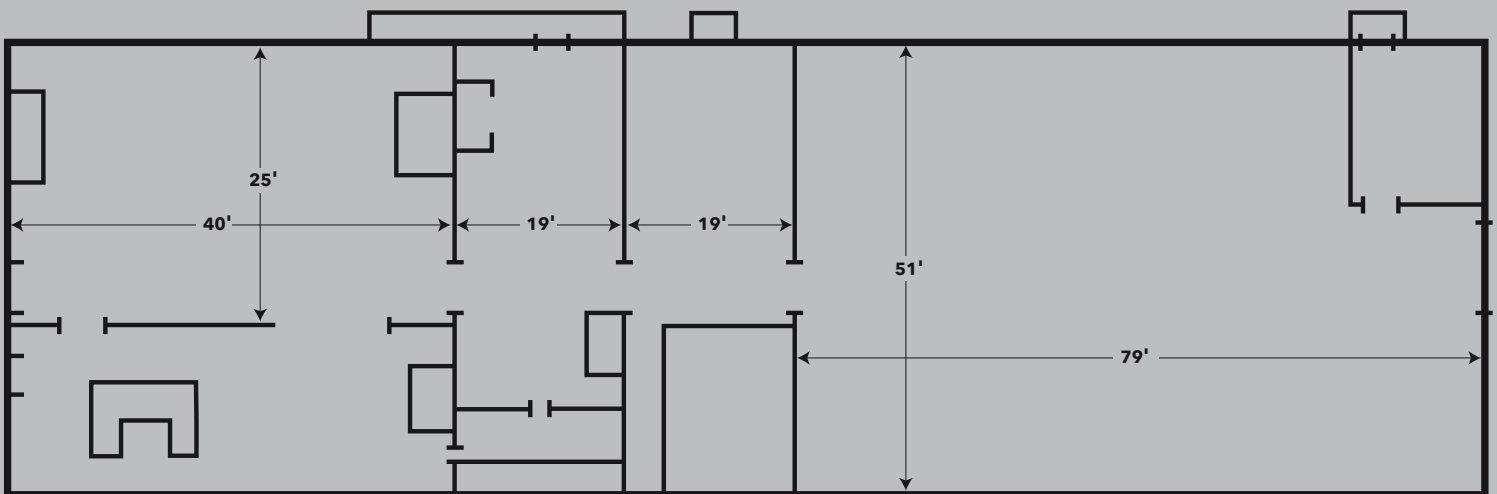
This historic venue located inside a renovated 1926 former railway freight depot is the perfect venue for any event. This unique urban chic setting allows for creative freedom, exuding a rustic or luxurious atmosphere with little to no effort. The 5,000 sq. ft. open event space boasts exposed brick and original steel/wood architecture elements combined with modern luxuries; fully air conditioned space, cathedral ceilings, custom lighting system and beautiful bay windows along the Pinellas Trail. Classroom and studio spaces are also available and perfect for fun customized team building or smaller events.

Photo courtesy of Villetto Photography





Photo courtesy of Villetto Photography



**m MOREAN CENTER FOR CLAY**  
ST. PETERSBURG FLORIDA

420 22nd Street South, Warehouse Arts District, St. Petersburg, FL  
MoreanArtsCenter.org

Please contact us at 727.821.7162 or [info@moreanartscenter.org](mailto:info@moreanartscenter.org)  
for more information, or to book a tour of the space.

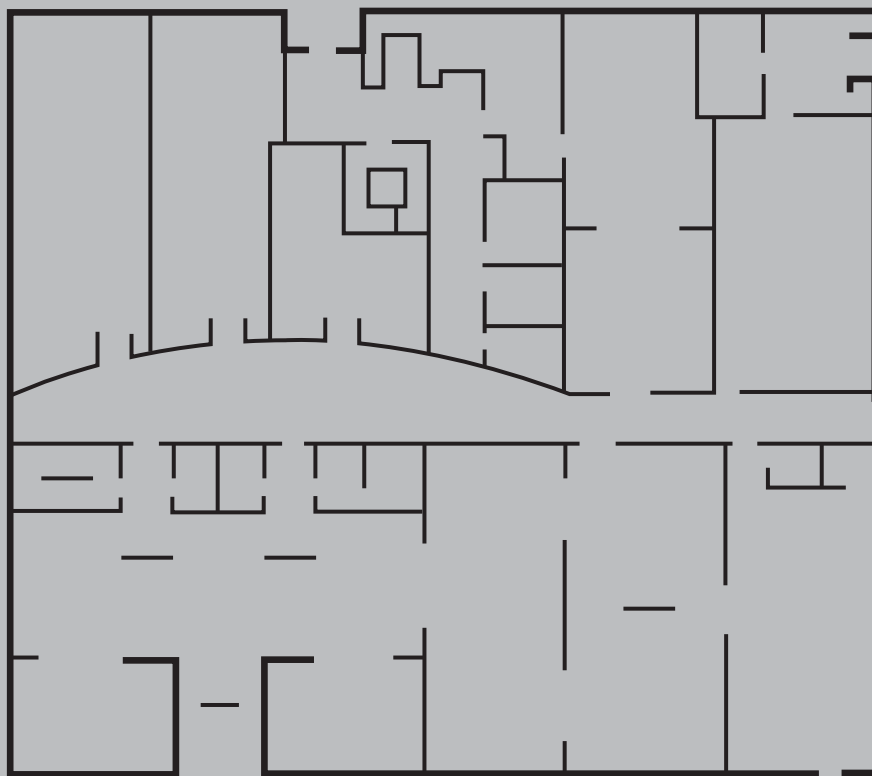


# MOREAN GLASS STUDIO AND HOT SHOP

An authentic experience awaits your guests with passionate glass artisans in this adventurous venue. Customized and dynamic programs are available with our select glass artisans in the Hot Shop blended with the behind-the-scenes experience at the spacious Glass Studio are sure to inspire your guests. Artisans work in front of the furnace, glory hole and annealing kiln creating works of art in the tradition of the Studio Glass movement. The adjacent gallery offers an amazing setting for your guests, adorned in beautiful hand-blown glass work.







719 Central Avenue, St. Petersburg, FL  
[MoreanArtsCenter.org](http://MoreanArtsCenter.org)

Please contact us at 727.822.7872 or [info@moreanartscenter.org](mailto:info@moreanartscenter.org) for more information,  
or to book a tour of either the Morean Arts Center or Morean Glass Studio & Hot Shop.

Five art galleries located on the ground floor of the Morean Arts Center along the eclectic and artsy Central Avenue provide for great event flexibility. The Bank of America Children's Learning Center is an ideal location for children's activities and may be booked for birthday parties and other children's events. It makes an ideal location for children to play during an adult event in the galleries as well. Abundant classroom and studio space make for excellent breakout or meeting rooms, or a unique progressive team building event.

MOREAN  
ARTS CENTER

## **Getting Around**

All venues are within five minutes via car or motor coach from each other making a progressive function fun and easy. Alternatively, the downtown St. Petersburg Trolley system has stops nearby both campuses, plus use of city-wide bike share program is easy and convenient. Ample parking exists at all facilities.

## **Tours, Workshops and Teambuilding**

Our mission is to connect people with art, and we either already have a dynamic program to suit your group or we'll be happy to work with you on a program tailored to your needs. Whether it is corporate team building involving creativity in painting or pottery or a more passive glass blowing demonstration, our staff and volunteers are totally passionate about serving you and your clients/guests.

## **Corporate Gifts**

We operate four retail facilities and specialize in glass and clay from limited edition studio line pieces from Dale Chihuly to hand-blown glass kisses or custom logoed paperweights from local glass artisans that are perfect for VIP turn-down service. Clay offers a variety of choices including handmade functional or sculptural work. We are happy to work with you on selecting the perfect local gift for your entire group or just one person. Alternatively, our Center for Clay is more than happy to work with you to create your very own personalized gifts that you can make yourself as a group.

## **Policies**

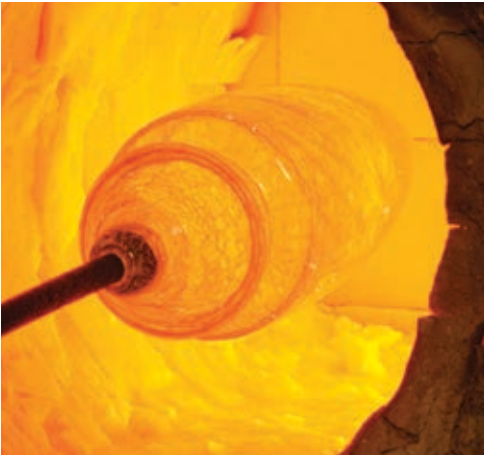
The rental of any of the Morean facilities is available to any individual or organization with the exception of political fundraising events. Discounts are available for non-profit organizations, please inquire.

The Morean reserves the right to review all special event plans to determine that the event is compliant with its mission and the purpose of the space rented.

Rental fees generally cover five hours of time including set up and break down, required security and admission to any galleries or exhibitions. It does not include any food and beverage, tables and chairs, taxes, labor charges, use of a/v equipment or art-related hands-on activity, unless specified.

All food and beverage needs will be serviced by a Morean approved caterer. The use of donated food or beverage is prohibited.





Dale Chihuly  
*Persian Ceiling*, 2008, 12 x 10'  
 Morean Arts Center, St. Petersburg,  
 Florida, installed 2010



Dale Chihuly, *Ruby Red Icicle Chandelier* (detail), 2010, 8 x 5 x 5' Morean Arts Center, St. Petersburg, Florida

# CHIHULY COLLECTION

PRESENTED BY THE MOREAN ARTS CENTER

720 Central Avenue | St. Petersburg, Florida 33701

Morean Glass Studio &  
**HOTSHOP**

719 Central Avenue | St. Petersburg, Florida 33701

 **morean** artscenter

719 Central Avenue | St. Petersburg, Florida 33701

 **morean** center  
**FOR CLAY**

420 22nd Street South | St. Petersburg, Florida 33712

[MoreanArtsCenter.org](http://MoreanArtsCenter.org)