

Expressive Still Life (Acrylics)

Materials list

Jim Gigurtsis©

If you have any questions on the materials feel free to email me jim_gigurtsis@yahoo.com

- Colors, (Artist range , heavy body preferred),
 - White , e.g. Titanium White
 - Yellow, e.g. Yellow Ochre or Lemon Yellow etc
 - Blue, e.g. Ultramarine Blue or Cerulean Blue etc
 - Red, e.g. Venetian Red or Alizarin Crimson etc
- Palette/painting knives (for an example see fig 1).
- Plastic Acrylic Palette (for an example see fig 2)– **(No disposable palette or Glass palette)**
- Measuring stick (will be provided)
- Brushes mostly large ones, size 4 and above. One small brush (size 0 or 1) for small details.
- Willow charcoal sticks (fig 3), pencils, eraser and masking tape.
- Paper towel and rags
- Painting surface 16x20" or 18x24". (e.g. Stretched canvas, Acrylic paper, canvas panel). You will need at least 2 for the 6 week course. Prime the surface with a color so that the background does not show. For the first painting mix blue and yellow and create a dark green. If the green is too bright add a bit of red.
- Containers for water.
- Notepad to take notes.
- Optional
- Square mirror at least 3x3" not bigger than 5x5" (see fig 5, 5x5 shown).
- Acrylic Retarder and a small spray bottle (for an example see fig 4). (Not essential)
- **NOTE:** all of the above can be purchased online (e.g. www.DickBlick.com) or at Michaels.

Fig 1



Fig 2

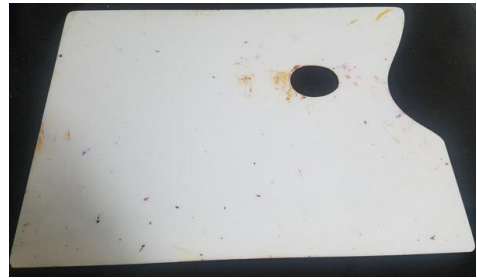


Fig 3



Fig 4



Fig 5

